

APA1200DSP Firmware Upgrade Guide

Items Required:

- 1) APA1200DSP
- 2) Included Power Cable
- 3) Included Ethernet Cable
- 4) A Windows PC with an ethernet jack, or a Windows laptop with an ethernet adapter. USB to ethernet adapters are widely available, both in USB A and USB C styles.

If you have configured a preset to your liking, make sure to save your current preset to your computer, because the update process will erase your presets and all other configured settings.

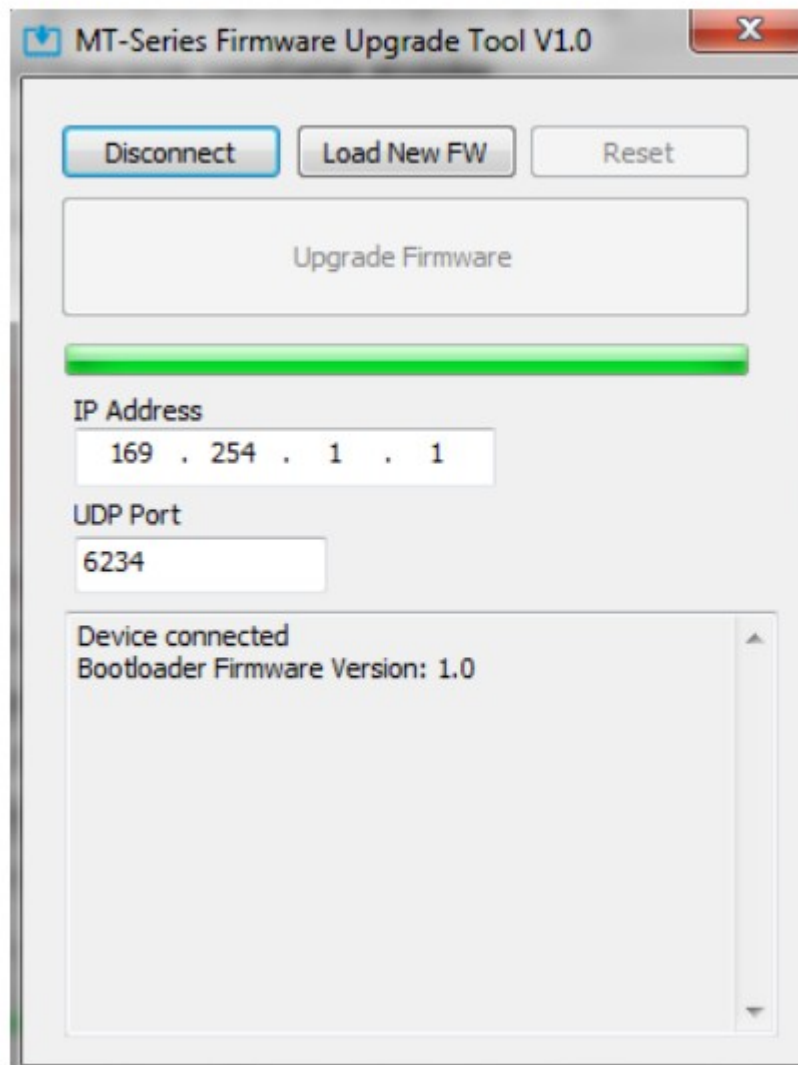
Steps:

- 1) Plug your APA1200DSP into power.
- 2) Plug the ethernet cable into the back of your APA1200DSP (the port is labeled LAN), and the other end of the ethernet cable into your PC.
- 3) Turn the APA1200DSP's power switch OFF.
- 4) Hold the front dial button down.
- 5) While holding down the front dial, switch the power switch ON.
- 6) The LEDs on the front panel will start to blink rapidly. This means the device is ready for update.
- 7) Release the front dial button.



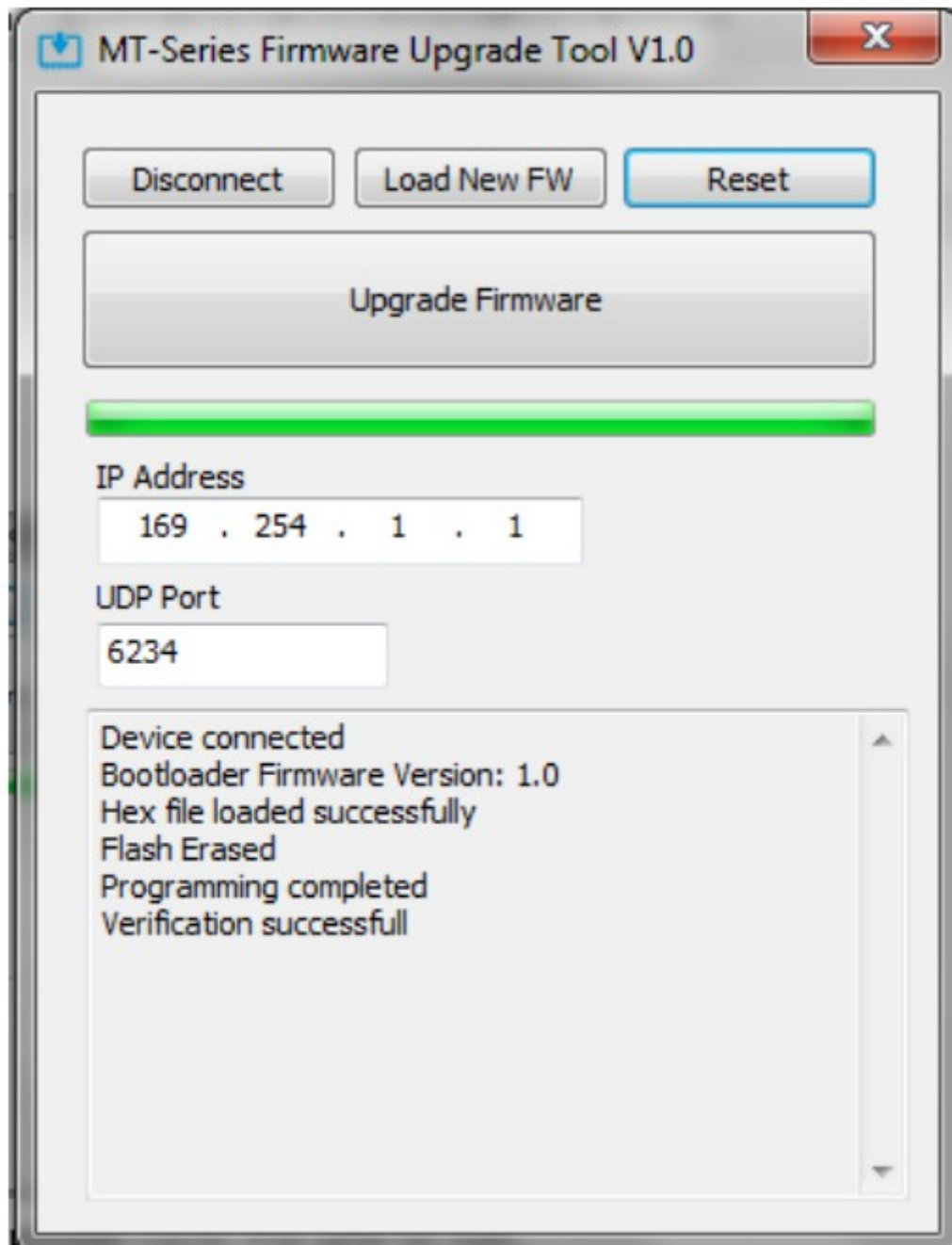
7) Open “MT-Series Upgrade Tool v1.0.exe”, this file should be included where this guide is found. No installation is required.

8) Press “Connect” in the upgrade tool. If successful, you will see the screen below. If unsuccessful, closely re-follow all of the previous steps in this guide, and check that your ethernet jack works properly.



9) Press “Load New FW”, and find the desired FW file for upgrade. In this example, we will be using “APA1200DSP_APP_V1.7_20210907.hex”

10) Press “Upgrade Firmware” after the correct file has been selected. If successful, you will see the screen below. If not successful, closely re-follow this guide, and ensure you selected the correct firmware file.



11) Reset your APA1200DSP by toggling the power switch on the back of the device. It is now ready to use.